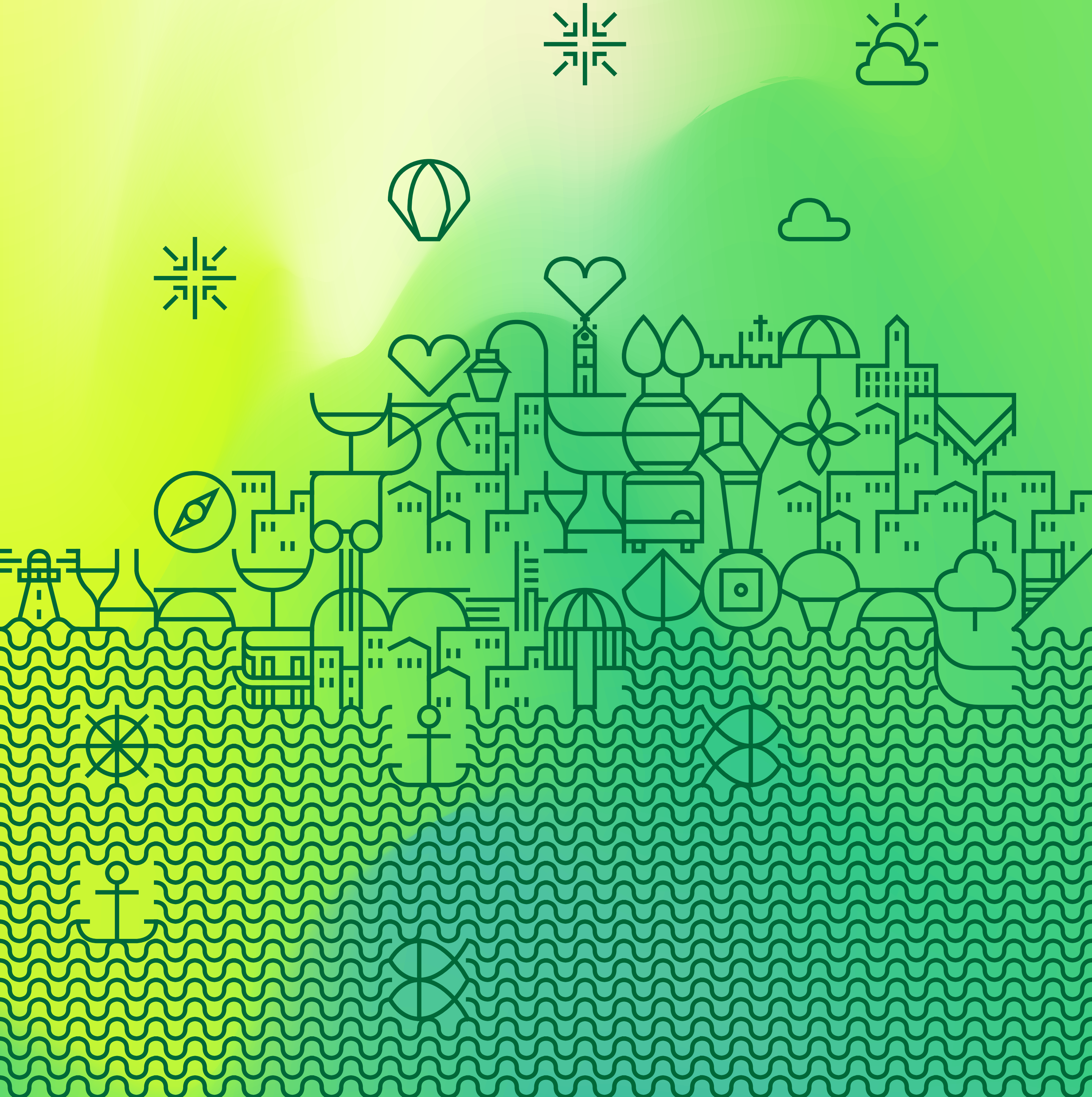


Porto.

Towards more sustainable tourism.

MUNICIPAL TOURIST TAX (MTT)



MUNICIPAL TOURIST TAX (MTT)

What is Porto's Municipal Tourist Tax (MTT)?

The MTT in Porto, as in several European cities, is a monetary amount charged to guests of tourist accommodations or local lodging establishments located within the municipality of Porto.

What is the purpose of Porto's MTT?

The MTT allows the city to invest in local infrastructure and facilities, in improving mobility, in enhancing safety and cleanliness and in preserving the city's cultural heritage.

How much is the MTT?

The MTT is €3 per night, up to a maximum of €21 (or seven consecutive nights).

Who is exempt from paying the MTT?

(The applicability of exemptions is subject to the presentation of supporting evidence.)

- Children and young people aged 12 and under;
- Guests whose stay is motivated by medical treatment, extending to two companions;
- Guests with a disability and/or incapacity equal to or greater than 60%, extending to two companions;
- Situations involving eviction in similar situations;
- Religious pilgrimage (namely to Santiago de Compostela or Fátima) on the first night when staying in pilgrim hostels in the city of Porto;
- People temporarily housed by state and/or municipal social organisations;
- People applying for asylum who, for reasons of conflict, have been displaced from their countries of origin and are temporarily residing in Portugal.

How and when is the MTT paid?

Payment of the MTT is requested by tourist accommodation or local lodging establishment and can be made at the beginning, during, or at the end of the stay.

More information:

Linha Porto. 220 100 220 | Porto City Council

<https://taxaturistica.cm-porto.pt/>

<https://comercioturismo.cm-porto.pt/turismo/taxa-municipal-turistica-do-porto>

Porto.